

E P S T E I N

ARCHITECTURE

ENGINEERING

CONSTRUCTION

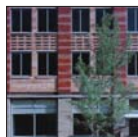
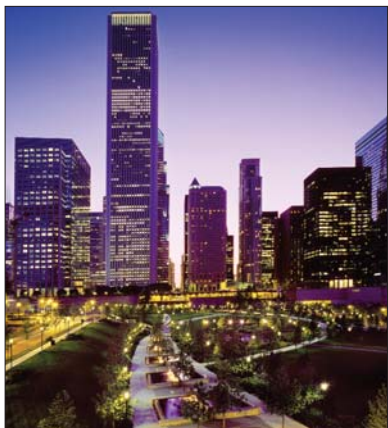
INTERIOR DESIGN

GRAPHIC DESIGN

Design Profile

JULY/AUGUST 2006

Home is Where Epstein's At



Home is Where Epstein's At

Over the past decade, one industry that has been able to withstand all of Wall Street's maddening fluctuations and experience record growth has been housing. New residential developments are sprouting up at record pace throughout the United States. Fueled by consumers who have taken advantage of historically low interest rates, housing developers have been responsible for a residential market boom unseen in the United States since the end of World War II.

This boom has not gone unnoticed at Epstein. Known to many as **the** go-to architect and engineer for large public sector projects or industrial facilities, over the past decade Epstein has designed and/or engineered over 30 residential developments throughout the United States, as well as international projects in Poland and China. These projects include include high-rise apartment complexes, mid-rise luxury condominiums, as well as mixed-use developments with high-end townhomes.

These residential projects have also helped generate a reputation amongst housing developers, like K. Hovanian Homes, that the Epstein organization is the ideal architectural and engineering partner for their residential developments. Epstein can offer developers a wide variety of professional services including architectural and interior design, full-service engineering, as well as pre-construction services like cost estimating and scheduling.

This ability to serve as a "one-stop shop" is extremely attractive to developers and has meant that in 2006 alone Epstein has nearly a dozen residential projects in design or construction in places like Las Vegas, Chicago, San Antonio, Los Angeles and West New York, New Jersey. As testament to Epstein's professional design and engineering talents, most of these projects are for repeat clients, or from client referrals.



Elm Tower
CHICAGO, ILLINOIS



Hudson Pointe South
NORTH BERGEN, NEW JERSEY

One of these repeat performances is **Hudson Pointe South**, a project that Epstein is currently providing architectural design services to K. Hovanian Homes in North Bergen, New Jersey. This project came to Epstein through the direct result of our work on **The Lofts @ Port Imperial**, an 11-story mixed-use residential building along the Hudson River in West New York, New Jersey. K. Hovanian Homes was impressed with the architect of record and interior design work Epstein provided on The Lofts that the firm was contracted to design this 24-unit condominium



building of approximately 66,500 square feet. Hudson Pointe South is located on the west bank of the Hudson River, with panoramic views of the Manhattan skyline, and is located on a pie shaped site. The units are arrayed in a rotating pattern which addresses the unusual site. This layout, and extensive use of glass on the river side of the building, also serves to expand the views from each unit up and down the river, while still according privacy from adjoining units.



Maple Tower
CHICAGO, ILLINOIS

Working with JDL Development Corporation, Epstein served as architect and engineer of record for two recently completed high-rise condominiums in Chicago, Illinois. **Elm Tower** is a 16-story development consisting of 39 residential units and a three-level parking garage and **Maple Tower** is a 21-story building with a two-story commercial/retail space. The positive experience JDL encountered with Epstein has resulted in two additional projects currently in design; **The Mercer**, a high-end residential complex in Las Vegas and **541 West Cornelia**, a 21-story unit luxury condominium in Chicago.

In addition to these projects, Epstein has recently been contracted by East West Partners, a Denver-based development company, to provide architect of record services for the design of **Capella Hotel and Residences** in Las Vegas; Fulton Properties Associates LLC to provide design, engineering and construction management services for **River Plains Condominiums** in Des Plaines, Illinois; and 611 West Sixth Street LLC for the design of **611 West 6th Street**, a residential conversion of a historic office building in Los Angeles.

Chicago

600 West Fulton Street
Chicago, Illinois 60661-1199
T 312.454.9100
F 312.559.1217

Los Angeles

10960 Wilshire Boulevard, Suite 900
Los Angeles, California 90024-3702
T 310.873.6100
F 310.473.4908

San Antonio

405 North St. Mary's, Suite 110
San Antonio, Texas 78205
T 210.828.6699
F 210.930.4027

China

A2, 29/F, Merchants Tower No. 118,
Jianguo Road, Chaoyang District
Beijing, China 100020
T 86.010.65660113.13
F 86.010.65660133.18

B-G 21 Floor B Block
Fortune Plaza Building
Shennan Road - Futian District
Shenzhen 518040
Guang Dong, China
T 86.755.3336.8728
F 86.755.3336.8730

Israel

298 Bar-Lev Rd.
Tel Aviv, Israel 61440
T 011.972.3.739.6722
F 011.972.3.739.6725

Poland

ul. Kruczkowskiego 8
00-380 Warszawa, Poland
T 48.22.525.0.300
F 48.22.525.0.301

Romania

28C Gen. Constantine Budisteanu St.
4th Floor, 1st District
Bucharest, Romania
T 40.21.311.6122
F 40.21.311.6120

Media Contact

Noel Abbott
Director of Marketing & Public Relations
T 312.429.8048
E nabbott@epstein-isi.com

