

EPSTEIN

Design Profile

OCTOBER/NOVEMBER 2004

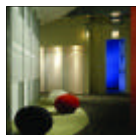
ARCHITECTURE

ENGINEERING

CONSTRUCTION

INTERIOR DESIGN

GRAPHIC DESIGN



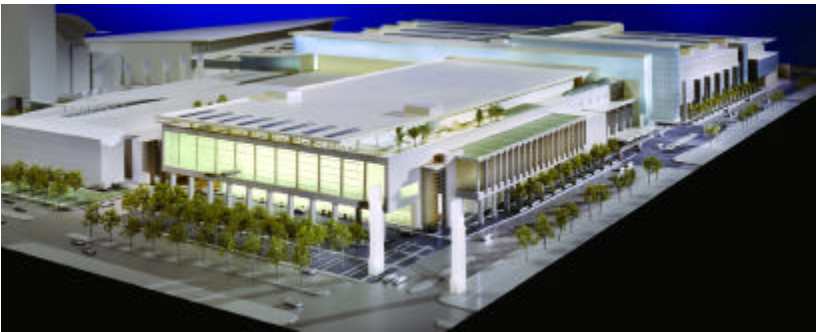
A Global Reach

When A. Epstein and Sons International, Inc. first was founded in Chicago in 1921, almost all of the firm's projects were located right here in Chicago. Abraham Epstein was a structural engineer and a number of these first projects were industrial in nature, ranging from warehouses to manufacturing facilities. As the firm grew, so did the services it offered and the range of projects it completed successfully. The firm's geographic reach expanded and projects soon were located throughout the United States and later throughout Europe as well.

In the late 1960's, offices were opened in France and Israel. In the 1970's, the firm was developing and completing a variety of projects in Europe and Israel. Epstein was one of the first American firms to do business in Eastern Europe. In 1972, Epstein signed a contract to undertake the first turnkey construction project by an American company in Poland and has maintained an office in Warsaw since that time.

By the turn of the century, Epstein recognized additional areas ripe for growth and established offices in those regions. The firm now maintains a San Antonio office to provide architecture and engineering services to this growing southwestern region. Internationally, as China's economy continues to grow and expand, Epstein opened an office in Shenzhen and a second China office in Beijing to meet their rapidly growing design and construction needs.

Epstein currently maintains its Chicago headquarters, US satellite offices in Los Angeles and San Antonio and an international presence in Warsaw, Poland; Shenzhen and Beijing, China; and Tel Aviv, Haifa and Beersheba in Israel. The following projects represent some of Epstein's more recent work located in the countries where the firm is working.



MCCORMICK PLACE CONVENTION CENTER - CHICAGO, ILLINOIS

Chicago: McCormick Place Convention Center West Expansion

Epstein, a member of the Mc4West, LLC joint venture team, is providing strategic leadership for this design/build expansion, currently the largest in the US. The firm is serving as architect and providing civil, structural, mechanical, electrical and plumbing engineering services plus interior design and environmental graphics. All aggressive milestones for the design schedule and permit issuance have been met with design documents issued on October 6th and the full building permit issued the very next day through unprecedented cooperation and communication with the City of Chicago's Department of Construction and Permits. Steel erection for the 2,300,000 square foot expansion began in November and all 1058 caissons were completed in early December. When the expansion is complete in March, 2008, McCormick Place will be the country's largest convention center.

Los Angeles: Cast & Crew

Epstein first opened a California office in 1971 and maintains its presence in Los Angeles. ISI, the firm's interior design unit, provides interiors and architecture expertise to industries including entertainment, law, banking and hospitality. ISI revitalized an existing warehouse for Cast & Crew, a payroll company for the entertainment industry, providing interior design expertise that used existing beams, trusses and exposed walls to create this exciting new space.



CAST & CREW · BURBANK, CALIFORNIA

San Antonio: Neisner Building

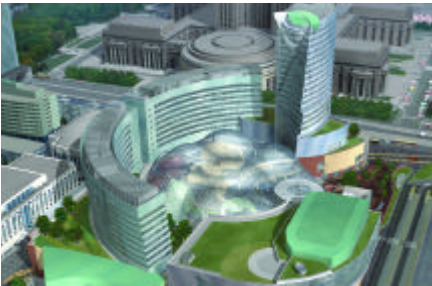
Epstein's newest US office is located in San Antonio, Texas and provides architecture and engineering expertise to this growing southwestern region. The firm currently is providing such services for the Neisner Brothers store building, a 64,000 square foot former retail space located in the downtown area and now being rehabilitated into high-end condominiums.



NEISNER BUILDING · SAN ANTONIO, TEXAS

Warsaw:
Zlote Tarasy

Epstein, working with design architect The Jerde Partnership, is serving as architect and engineer for this 200,000 square meter (2,200,000 square foot) mixed use development located in downtown Warsaw, near the Warsaw Financial Center, another well-known building where Epstein served as architect and engineer. The Zlota Center will be Poland's first western-style mixed use center combining office space, multi-level retail, hotel, entertainment and parking facilities all in one complex.



ZLOTE TARASY - WARSAW, POLAND

Israel:
Tnuva Dairy

Epstein established its first Israeli office in 1968 and currently provides architecture and engineering services through three offices it maintains in this country. Epstein Israel served as the construction manager for the Tnuva Dairy, a 650,000 square foot facility located at Alon Tavor in northern Israel.



TNUVA DAIRY - ALON TAVOR, ISRAEL

China: Dongguan Mixed Use Development

The Pearl River Delta in southeastern China offers unparalleled opportunities for growth in areas such as Dongguan City where Epstein developed a conceptual design for an elaborate mixed-use development. The design reconciles the needs of a large, mixed-use building with issues of urban design, pedestrian scale and the environment. The result is a design of more than 130,000 square meters of efficient office and retail space combined with 'sky gardens' that consider both the end users and the broader urban context of this facility.



DONGGUAN
MIXED USE DEVELOPMENT
DONGGUAN CITY, CHINA

Chicago

A. Epstein and Sons International, Inc.
Interior Space International (ISI)
annex|5
neXt wayfinding + design

600 West Fulton Street
Chicago, Illinois 60661-1259
T: 312.454.9100
F: 312.559.1217

Los Angeles

Interior Space International (ISI)

10960 Wilshire Boulevard, Suite 900
Los Angeles, California 90024-3702
T: 310.473.5358
F: 310.473.4908

San Antonio

A. Epstein and Sons International, Inc.

The Travis Building
405 North St. Mary's, Suite 110
San Antonio, Texas 78205
T: 210.828.6699
F: 210.930.4027

Poland

Epstein Sp. z o.o.

ul. Kruczkowskiego 8
00-380 Warszawa, Poland
T: 48.22.525.0.300
F: 48.22.525.0.301

Israel

A. Epstein and Sons (Israel) Ltd.

298 Bar-Lev Road
P.O. Box 9084
Tel Aviv, Israel 61090
T: 972.3.739.6722
F: 972.3.739.6725

China

Epstein China

B-G 21 Floor B Block
Fortuna Plaza Building
Shennan Road - Futian District
Shenzhen 518030
Guangdong, China
T: 86.755.3336.8728
F: 86.755.3336.8730

www.epstein-isi.com

