

EPSTEIN

Design Profile

JANUARY/FEBRUARY 2005

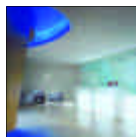
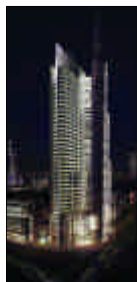
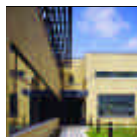
ARCHITECTURE

ENGINEERING

CONSTRUCTION

INTERIOR DESIGN

GRAPHIC DESIGN



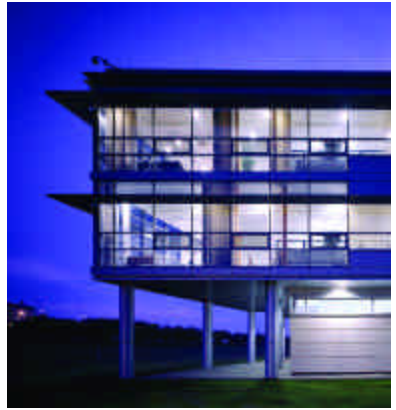
A Solid Foundation

Now in its 84th year, Epstein entered 2005 having concluded one of its most successful years on record and anticipating another year of solid growth. The close of 2004 saw a number of Epstein projects lauded for their design excellence and the firm itself recognized for its fiscal strength.

Epstein was chosen in 2004 by Zweig White, a leader in management consulting and media for the architecture, engineering and construction industry, as one of its top 10 leading growth firms. Epstein ranked 6th on Zweig White's 'Hot Firm' list of 100 high-growth AEC firms, illustrating the outstanding growth and development Epstein experienced throughout the past year.

A number of the firm's projects were honored by industry peers and media alike as outstanding examples of design and construction. From the sleek, modern lines of Serta's new corporate headquarters to the massive, coordinated effort of the rehabilitation of Chicago Midway Airport, Epstein's work in Chicago and around the world was recognized for its excellence.

The following projects illustrate Epstein's award-winning work in 2004 and offer a glimpse of just a few of the firm's projects on the horizon in 2005.



Motorola Global Software Group

KRAKOW, POLAND

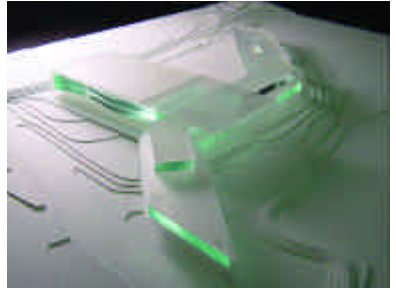
This striking facility is located on a 45-acre site on the outskirts of Krakow, Poland as part of a master planned technology campus for the 800-year old Jagiellonian University. The three-story, 66,000 square foot structure was designed with floor to ceiling glass to allow maximum daylight and views for employees. Work stations are set back from exterior walls to allow circulation access near these light-filled spaces. Epstein's in-house design studio, annex | 5, provided the design for the facility while the firm further provided civil, MEP and structural engineering. The exceptional design received a 2004 Award of Honor from the Society of American Registered Architects.

Serta Corporate Headquarters

HOFFMAN ESTATES, ILLINOIS

Epstein's in-house design group, annex | 5, along with ISI, the firm's interior design unit, developed a sleek, 80,000 square foot design solution for Serta International Mattress Company's corporate headquarters located in

Hoffman Estates, Illinois. The structure will house research and development and office functions and is located on a seven acre parcel in an environmentally sensitive business park near protected wetlands. Parking is maintained under the structure, reducing impervious surfaces and allowing the structure to 'float' in a sea of green prairie grass. This outstanding and unique design was recognized by the Society of American Registered Architects with a 2004 Award of Honor.



Chicago Midway Airport

CHICAGO, ILLINOIS

The \$927 million rehabilitation of Chicago Midway Airport officially was completed in June, 2004 and marks the successful conclusion of one of Epstein's more complicated projects. Epstein led the team for the replacement of the existing terminal that dated from 1947, a new parking garage and a new pedestrian bridge. The firm provided design work for the terminal, pedestrian bridge and parking facility and overall project management. Epstein's exemplary coordination of the 20 firms involved in this nine year project enabled Midway to remain fully operational throughout the entire rehabilitation and tripled Midway's terminal size to more than 900,000 square feet. This outstanding effort was recognized by *Midwest Construction* magazine with a 2004 Award of Merit in the Transportation category.



Triumph Foods, LLC Pork Processing Facility

ST. JOSEPH, MISSOURI

Epstein is both designing and constructing what will be the country's most efficient pork processing facility when it is complete in summer, 2005. The plant is designed to incorporate the latest in production equipment and offers improved health, safety and efficiency systems. The \$150 million, 625,000 square foot state-of-the-art facility will be able to process 1,100 hogs per hour and is slated to employ more than 1,000 production workers while also serving as Triumph's corporate headquarters.



Hyatt Center Office Tower

CHICAGO, ILLINOIS

Hyatt Hotel's striking 47-story corporate headquarters is the latest addition to Chicago's skyline and currently is welcoming tenants as they start to occupy this exciting new structure. Epstein is serving as coordinating architect and architect of record, working in conjunction with Pei Cobb Freed and Partners, LLP and further providing civil engineering and environmental graphics expertise for the structure. The 1,800,000 square foot building boasts a very efficient floorplate design and commanding views of the city and houses Hyatt's corporate functions plus the offices of well-known law and banking firms. It includes below-grade parking, food service and health club facilities.



Chicago

A. Epstein and Sons International, Inc.
Interior Space International (ISI)
annex|5
neXt wayfinding + design

600 West Fulton Street
Chicago, Illinois 60661-1259
T: 312.454.9100
F: 312.559.1217

Los Angeles

Interior Space International (ISI)

10960 Wilshire Boulevard, Suite 900
Los Angeles, California 90024-3702
T: 310.473.5358
F: 310.473.4908

San Antonio

A. Epstein and Sons International, Inc.

The Travis Building
405 North St. Mary's, Suite 110
San Antonio, Texas 78205
T: 210.828.6699
F: 210.930.4027

Poland

Epstein Sp. z o.o.

ul. Kruczkowskiego 8
00-380 Warszawa, Poland
T: 48.22.525.0300
F: 48.22.525.0301

Israel

A. Epstein and Sons (Israel) Ltd.

298 Bar-Lev Road
P.O. Box 9084
Tel Aviv, Israel 61090
T: 972.3.739.6722
F: 972.3.739.6725

China

Epstein China

B-G 21 Floor B Block
Fortuna Plaza Building
Shennan Road - Futian District
Shenzhen 518030
Guangdong, China
T: 86.755.3336.8728
F: 86.755.3336.8730

www.epstein-isi.com

