

EPSTEIN

ARCHITECTURE

ENGINEERING

CONSTRUCTION

INTERIOR DESIGN

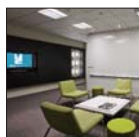
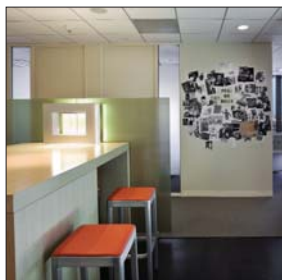
GRAPHIC DESIGN

Design Profile

MARCH/APRIL 2008

"Creative Energy"

ANSCHUTZ FILM GROUP



EPSTEIN

"Creative Energy"

ANSCHUTZ FILM GROUP



Anschutz Film Group is a film development and production company that focuses on family entertainment (AFG films are rated G, PG, and PG-13 only) through its Fox-Walden production studio. Some of AFG's films include *The Chronicles of Narnia* series, *Nim's Island* and *Charlotte's Web*. ISI (Epstein's interior design subsidiary) led by Mark Bryant, design director, provided full interior design services and lighting design for the 10,000 square-foot expansion of creative office space on the 10th floor of the building in Los Angeles where AFG currently occupies 25,000 square feet.

The new space complements AFG's existing space on the 14th floor, conveying the energetic vibe of the company and the open, communal atmosphere of the employees'

work style. Every part of the office is a collaborative zone where employees can gather to test out new ideas, draw storyboards for film projects, and interact in the creative process. "The whole office is designed to foster creative work," says Mark. Team spaces like the conference room and 'war room' lounge have full presentation capabilities with flat screens, surround sound audio, magnetic white boards, and display rails. The open kitchen area with its illuminated 'art wall' is a place where employees can eat, meet informally, or get inspired. The island counter in the kitchen has a built-in compartment for a music mixing panel where staff can access the amplified sound system heard throughout the space. Even the work room where promotional materials are stored is a meeting place for employees who view promotional film stills under controlled conditions on a special magnetic wall with color corrected lighting. The entire space is maxed-out for technology and power for future growth.

Lighting was important to the client. Gary Bouthillette, ISI's project designer and lighting designer, integrated lighting into the space in a unique way. Responding to the client's request for places to feature different artwork, Gary designed oversize "light boxes" that act as space partitions and display cases for images which the client can change. The reception area features the Fox-Walden logo backlit in one of these light boxes. Other lighting fixtures mirror the light box theme and unify the overall design of the space.



Anschutz Film Group
LOS ANGELES, CALIFORNIA





Chicago

600 West Fulton Street
Chicago, Illinois 60661-1199
T 312.454.9100
F 312.559.1217

Los Angeles

10960 Wilshire Boulevard, Suite 900
Los Angeles, California 90024-3702
T 310.873.6100
F 310.473.4908

New York (Site Office)

330 West 34th Street, Suite 1800
New York, New York 10001-2406
T 212.843.1800
F 212.843.1818

China

Room 3102-3105
Excellence Time Square
Yitian Road, Futian CBD
Shenzhen, China 518048
T 86.755.33953660
F 86.755.23994386

Poland

ul. Kruczkowskiego 8
00-380 Warszawa, Poland
T 48.22.525.0.300
F 48.22.525.0.301

Romania

Premium Plaza
63-69 Dr. Iacob Felix Street
Floor 7 and 8, Sector 1
Bucharest, Romania
T 40.21.311.6122
F 40.21.311.6120

Media Contact

Noel Abbott
Director of Marketing & Public Relations
T 312.429.8048
E nabbott@epstein-isi.com

Culture Statement

Epstein strives to be recognized as the best employee-owned architecture, design, engineering and construction organization with a strong sense of passion, creativity, professionalism and trust.

